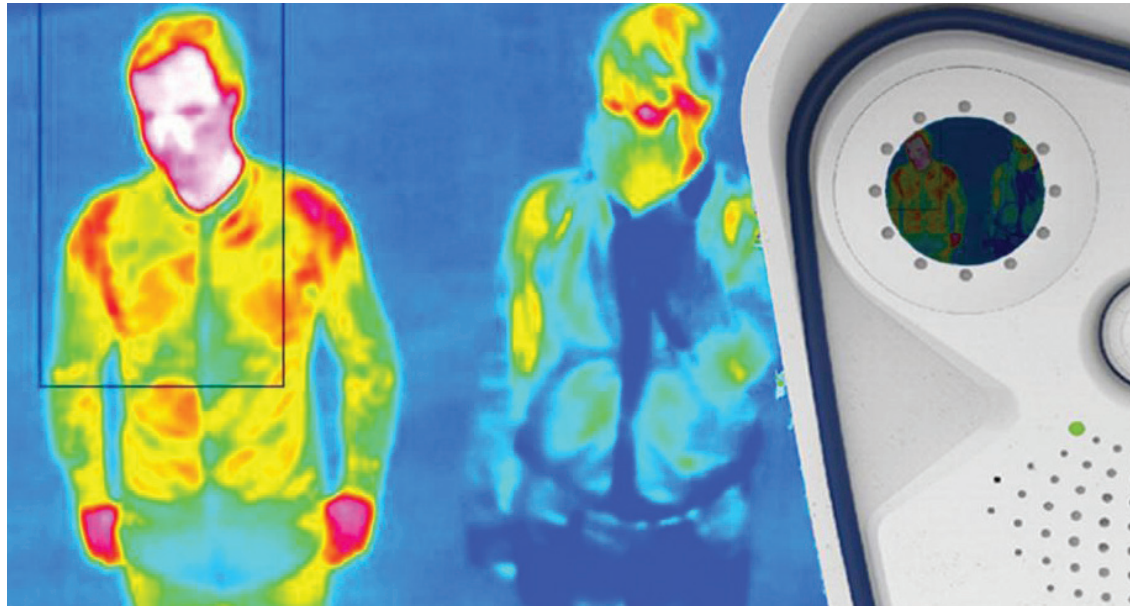


Benefits of Thermal Cameras

Thermal cameras can be an important part of an overall solution for addressing Covid-19:

- Providing an easy way to scan large numbers of people without requiring them to wait in line.
- Issuing automatic alerts in the event an elevated skin temperature is detected.
- Easily adapting to your specific environment with fully-integrated solutions that can be fixed or portable.

The JCT solution has been found to meet the specific requirements of Section 564 of the Federal Food, Drug and Cosmetic Act and has therefore received an FDA Emergency Use Authorization.



Helping keep your workplace safe during Covid-19

Thermal cameras have long been used in a wide range of applications including firefighting, public safety, health care and the military. JCT Solutions offers a simple, compact thermal camera solution that has received FDA Emergency Use Authorization for conducting temperature screening to help prevent the spread of Covid-19.

Elevated Temperatures Trigger Alerts

The thermal camera solution provided by JCT Solutions can very quickly read skin-level temperatures, detect extremely small temperature differences (with an accuracy of 0.4 degrees Celsius) and automatically provide a notification via an alarm, call, email, etc.

Thermal cameras are an alternative to other temperature-screening methods, such as infrared thermometers or oral thermometers,

that require a closer proximity or actual contact to measure temperature.

Thermal cameras can be used to continuously scan a large number of people as they move through an area, lessening or eliminating the need for people to wait in line to have their temperatures taken (which in turn also reduces the risk of COVID-19 transmission). People with elevated temperatures can then receive further screening.

Customizing Solutions to your Needs

JCT Solutions works with you to customize a thermal camera solution to meet your needs including as a fixed installation (for example, a ceiling mount) or as a portable unit. Rugged design enables the cameras to operate virtually anywhere, including outside during cold weather (-30° C/-22° F).

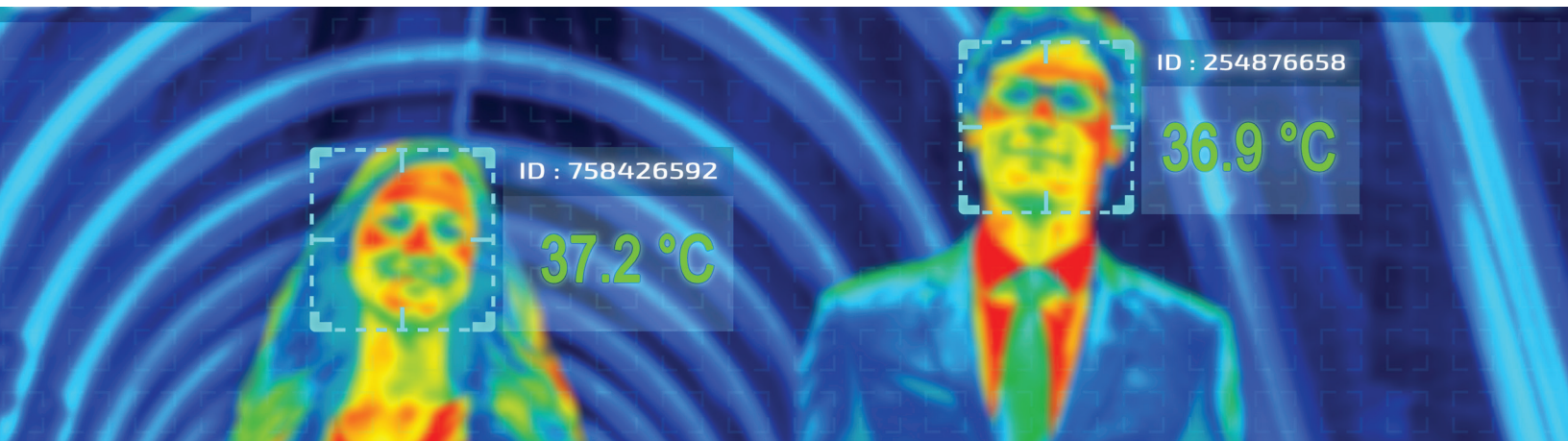
A single thermal camera functions as a complete, stand alone, video and audio system including an embedded video management system and analytics. Requiring less than 10 watts of power, they can be connected and powered cost-effectively including via Power over Ethernet. An expansion module allows for use with a microphone or speaker. All settings can be adjusted via the camera firmware using a web browser.

Dual Camera Systems

These are dual camera systems that can automatically switch from thermal to optical mode and generate high-resolution video. This provides privacy during general temperature screening (the temperature profile generated does not show any details for personal identification) while also providing access to high-resolution video material when needed. A special thermal image overlay function makes it possible to fade in thermal radiation information into the optical image.

Thermal Camera Solution at a Glance

| | |
|---|---|
| Detection of elevated skin temperature | Moonlight technology for very low light operating conditions |
| Display of temperature differences from 0.4°C | Image/event processing at camera level, very low network load |
| Email & text messaging upon alarm/event | Up to 512GB SD card storage on-board camera |
| No additional software required | Record directly to local or remote storage (NAS) or cloud storage |
| Linux operating system | Up to 12 megapixel image size |
| DVR/NVR | 2-Way Audio & VoIP telephony |
| Video management system (VMS) | Power Over Ethernet (POE) |
| Intelligent video analytics for advanced motion detection | |



NOTE: Thermal cameras are not a replacement for a device, such as a thermometer, which directly measure core. While temperature-based screening enables you to identify a person with an elevated body temperature, which can be an indication that the person has contracted an illness, a diagnostic test must be performed to determine if the individual actually has an illness. Also, a person can have an illness, such as Covid-19, and not have an elevated body temperature.



PO Box 390 Kearny, NJ 07032
800.437.9828 www.jctnj.com